

LED HIGH BAY light \ Tunnel lamp



宁波兴莱达灯具有限公司
NINGBO XINGLAIDA LAMPS CO., LTD

2015+ *New* Product



Product Features

1. Modular design, Optic-driver & heat-electricity separate arrangement make on-site individual maintenance possible.
2. Heatsink of module in high heat conductivity extruded aluminum alloy, equipped with IP67 cable gland. Optica components and heatsink are connected with high temperature proof sealing gasket, which ensure the module has an Ip66 protection.
3. The whole luminaire is designed based on Chimney effect, simultaneously achieve functions of air exchange and preventing entry of dust and sand.
4. Mounting bracket adjustable within 50°, allowing various installation.
5. Free of Halogens, lead, mercury and other hazardous substances, fully ROHS compliant.

Applications

Factories, Tunnels, Square and etc.

Specification

Model	XLD-LEDG008-XX050	XLD-LEDG008-XX100	XLD-LEDG008-XX150	XLD-LEDG008-XX200	XLD-LEDG008-XX250
Power	50W	100W	150W	200W	250W
LED Model	CREE XTE/LG 3030				
Working voltage	AC 85~305V 50/60Hz				
Luminous efficacy	≥100 lm/w				
Working life	50,000h				
Power efficiency	≥88%	≥89%	≥91%	≥91%	≥91%
Power factor	>0.96				
IP rating	Module IP66, Driver IP67				
Working temperature	-20~50°C				
Product size	201*359*204.5mm	286*359*204.5mm	366*359*204.5mm	446*359*204.5mm	446*359*204.5mm
Product weight	3.05KG	4.3KG	5.8KG	6.9KG	8.1KG

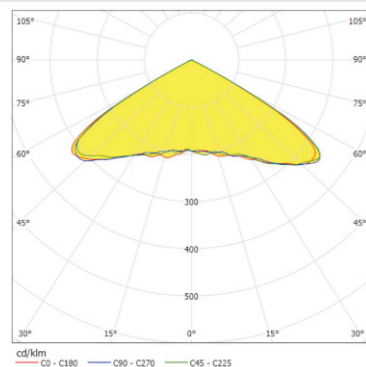
*Standard color temperature 4300K, Ra≥70

*Above parameters will differ under solar power supply

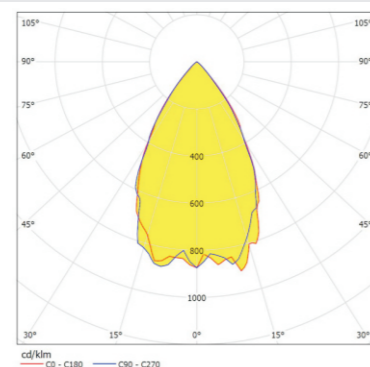
*Above parameters for reference only, tolerance exist for partial parameters

*With XTE Chip, Power can be increased to 65W/Module

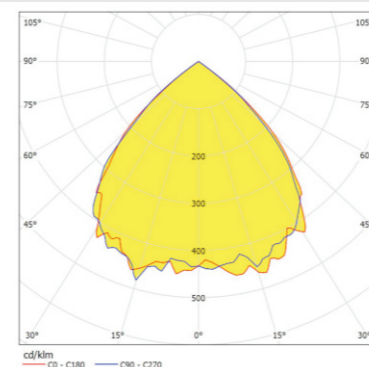
Photometric Data



XTE LED/120° beam angle



3030 LED/60° beam angle

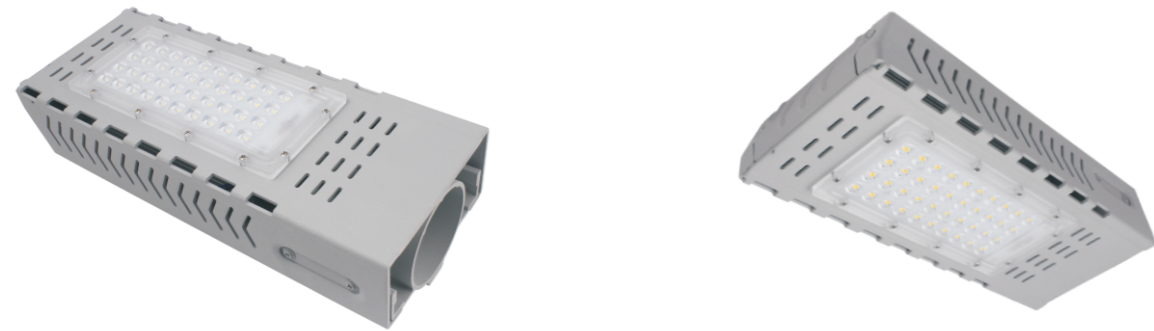


3030 LED/90° beam angle



Tel:86-574-62350661
 Fax:86-574-62350999
[Http://www.xinglaida.com](http://www.xinglaida.com)
[Http://www.lightfixture4u.com](http://www.lightfixture4u.com)
 E-mail:sales@xinglaida.com web@xinglaida.com

LED Street light



● Product Features

- 1、 Waterproof separate optic-gear compartment design, light source installation position IP65, Driver IP67
- 2、 Simple appearance, light weight.
- 3、 Constant current driver features IP67 protection,4KV lightning proof,over temperature protection,over voltage protection.
- 4、 Free of halogen,lead and mercury,fully ROHS compliant.

● Applications

Walking path, alley, residential community, square and etc..

● Specification

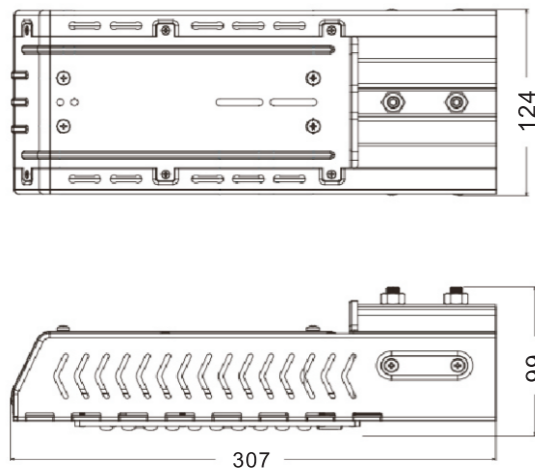
Model	XLD-LED055-XX030	XLD-LED055-XX040	XLD-LED055-XX050
Power	30W	40W	50W
LED Model	LG 3030		
Working voltage	AC 176~305V 50/60Hz		
Luminous efficiency	≥110 lm/w	≥95 lm/w	
The working life	50,000h		
Power efficiency	≥88%		
Power factor	>0.95		
IP rating	IP65		
Working temperature	-20~50°C		
Product weight	1.6KG	1.9KG	

*Standard color temperature 4300K,Ra≥70

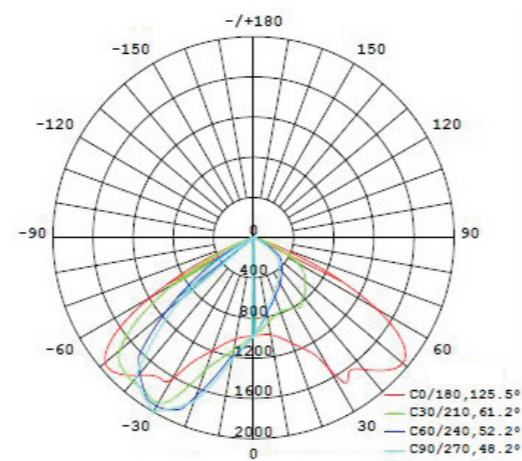
*Above parameters will differ under solar power supply

*Above parameters for reference only,tolerance exist for partial parameters

● Dimensions(mm)



● Photometric Date



Note:Ningbo Xinglaida Lamps reserve the right to interpret the content.

LED HIGH BAY light\Tunnel lamp



● Product Features

- 1、 Heat sink in hi-conductivity die casting aluminum equipped with I P67 cable gland. Separate optic-gear compartment.
- 2、 Built-in heatsink design, two stage IP66 protection ensure dust&sand resistant performance
- 3、 Universal-design fitter is tiltable up and down allow vertical and horizontal mounting
- 4、 Free of halogen,lead and mercury,fully ROHS compliant.

● Applications

Factory, tunnel, square and etc.

● Specification

Model	XLD-G007-XX050	XLD-G007-XX100	XLD-G007-XX150	XLD-G007-XX200
Power	50W	100W	150W	200W
LED Model	CREE XTE/LG 3030			
Working voltage	AC 176~305V 50/60Hz			
Luminous efficiency	≥100 lm/w			
The working life	50,000h			
Power efficiency	≥88%	≥89%	≥90%	≥91%
Power factor	>0.96			
IP rating	IP65			
Working temperature	-20~50°C			
Product Size	193*315*130mm	238*315*130mm	283*315*130mm	373*315*130mm
Product weight	1.7KG	3.75KG	5.5KG	6.2KG

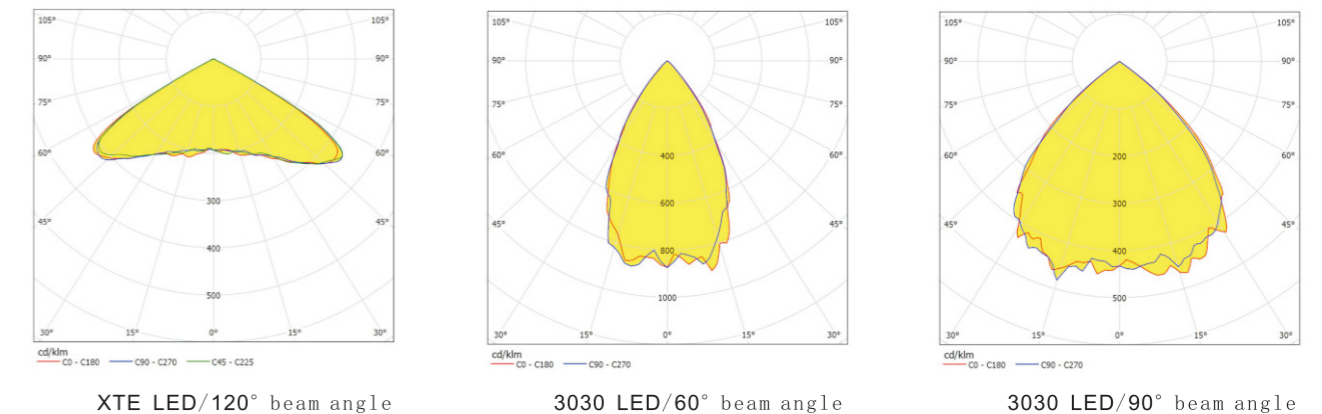
*Standard color temperature 4300K,Ra≥70

*Above parameters will differ under solar power supply

*Above parameters for reference only,tolerance exist for partial parameters

*With XTE LED, Power can be increased to 65W/Module

● Photometric Date



Note:Ningbo Xinglaida Lamps reserve the right to interpret the content.