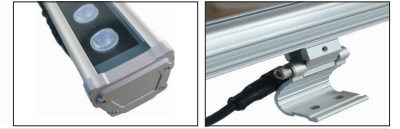
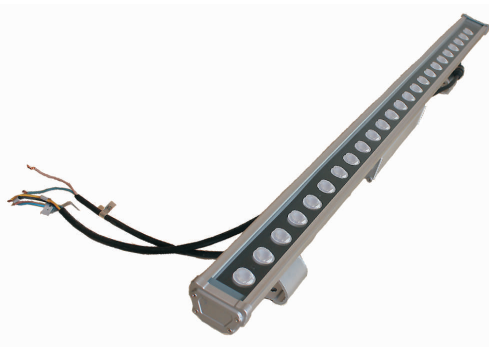


LED Wall Washer



产品特点 Product Features

1. 外壳采用6063铝合金挤出成型。Casing in high heat conductivity aluminum alloy.
2. 产品表面采用阳极氧化处理,确保产品的耐候性及热辐射性能。Anodized surface treatment, excellent weather proof & radiation performance.
3. 独特的密封结构设计确保产品防护等级达到IP65。Unique structure design ensure IP65 protection.
4. 安装支架采用间距、角度可调式设计,实现各种场景通用性安装。Spacing & angle adjustable bracket allow universal installation.
5. 不含卤素、铅及汞等有害物质,完全符合欧盟ROHS规范。Free of halogen, lead and mercury, fully ROHS compliant.

应用场所 Applications

应用于立交桥、建筑景观照明,住宅区等亮化场所。Buildings,Crossover,Landscape,Residential community and etc.

规格 Specification

型号/Model	XLD-WW03-XX12	XLD-WW03-XX18	XLD-WW03-XX24	XLD-WW03-XX30
功率/Power	12W	18W	24W	30W
LED芯片/LED chip	Cree/Bridgelux/Epistar/philipslumileds			
工作电压 Working voltage	AC 85~305V Or DC 24V			
光色/Light color	Cool white/Neutral white/Warm white/Red/Green/Blue/Amber/RGB			
使用寿命 Working life	50,000h			
光束角 Beam angle	15°/25°/30°/45°/60°/25°*45°			
防护等级 IP rating	IP65			
工作环境温度 Working temperature	-20~50°C			
A尺寸 A size	510mm	510mm	975mm	975mm

*可多色混合。Multi-color control

*DMX512控制。DMX512 control

*以上参数为参考值,部分参数实际存在的误差。Above parameters for reference only,tolerance exist for partial parameters

产品尺寸 Dimensions(mm)

